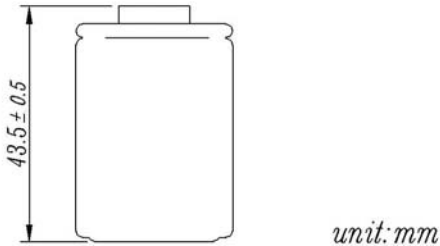
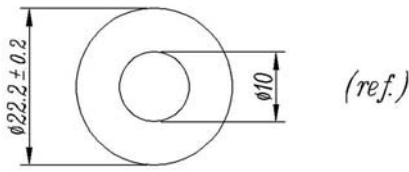
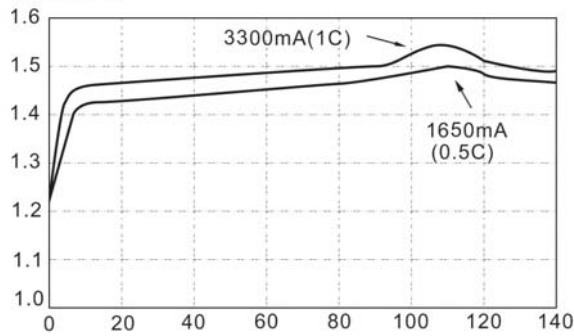


Sealed Rechargeable Cylindrical cell Nickel Metal Hydride

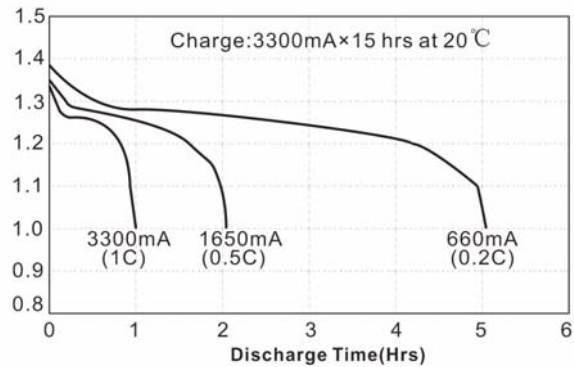
SC-3300 mAh



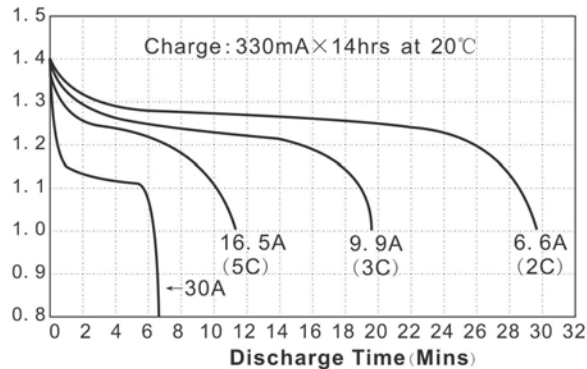
Fast Charge (Charge Control required)
Voltage(V)



Low Rate Discharge
Voltage(V)



High Rate Discharge
Voltage (V)



Date Sheet

- Type**-----EnrichpowerSC3300
- System**-----Sealed rechargeable Ni-MHCylindrical cell
- Nominal Voltage**-----1.2V
- Application**-----Discharge current 330mA to 30A (Continuous)
- Capacity** (discharged at 0.2C to 1.0v at 20°C)
 Nominal 3300mAh
 Minimum 3200mAh
 Typical 3300mAh
- Internal resistance** (at 1 kHz)
 Fully charged, 20°C (approx)---4~6mΩ
- Weight approx**-----55g
- Dimensions**(including shrink sleeve)
 -Diameter -----22.2(±0.2mm)
 -Height -----43.5(±0.5mm)
- Cd content(%cell w)**:-----0%
- Typical Discharge time&Avg.Voltage** (20°C)
 30A--390S--1.150V (TURBOMATCHER, discharged at 30A to 0.9v at 20°C)
- Max.discharge current**(continuous)-----20C
- Charging conditions**(20°C)
 standard charge-----330mA 14h
 quick charge-----3300mA 1.1h
 fast charge -----2A to 6A
- Charge termination control recommended control parameter
 - Δ V 5mV
 DT/dt 0.8°C/min(0.5-1C)
 0.8°C-1°C/min(>1C)
 TCO 40-45°C
 Timer 105%nominal input
- Continuous** 100mA maximum current for 1 year
- Overcharge** No conspicuous deformation and/or leakage
- Max.charging voltage** 1.5V at 330mA charging
- Operation temperatures**(recommended)
 Storage----- -20°C up to +35°C
 Discharge----- -20°C up to +50°C
 standard charge----- 0°C up to +40°C
 quickcharge,fastcharge-- -10°C upto +40°C
 permanent charge----- +10°C up to +45°C
- Life expectancy**(20°C)----->500 cycles